

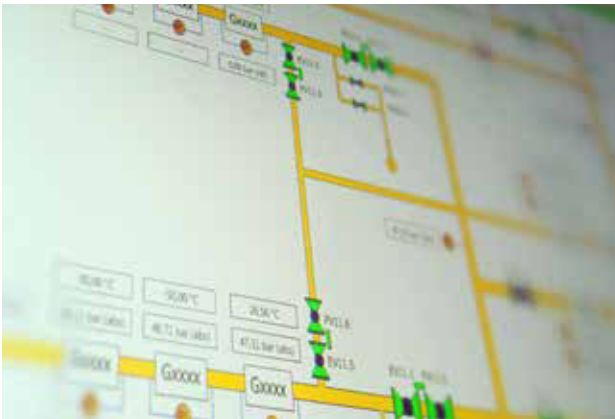
**High-pressure calibration
with natural gas**
Customized service
Pre-calibration with air

High-pressure test facility
for gas measuring devices



RMA high-pressure test facility: Severe testing of gas meters

High-pressure test facility with natural gas



As a long-standing and reliable supplier and partner of companies in the gas supply sector and industry in general, we offer a broad range of products and services tailored to their specific needs. Our “state-approved test centre for gas measuring devices” is a central element in our aim to offer our customers a complete system.

Apart from a test facility operating with air, we have a state-of-the-art high-pressure test facility for gas measuring devices.

This high-pressure test facility serves to adjust and calibrate or verify gas meters with natural gas. In addition, it can also be used for challenging series of measurements within the scope of product development or type examination processes.

Due to the fact that our test centre is state-approved, the measuring equipment is regularly monitored by the relevant office of weights and measures, which closely cooperates with the Federal Institute of Physics and Metrology (PTB) in Brunswick, Germany.

Our test facility is based on national standards and further transfer standards. This ensures not only high safety but also reliable and correct measurements.



The following devices can be measured and verified with our test facilities:

- **Volumetric gas meters**
 - Rotary displacement meters
- **Velocity gas meters**
 - Ultrasonic flowmeters
 - Vortex flowmeters
 - Turbine meters
- **Gas volume (PTZ) correctors and additional equipment**



All-in-one service

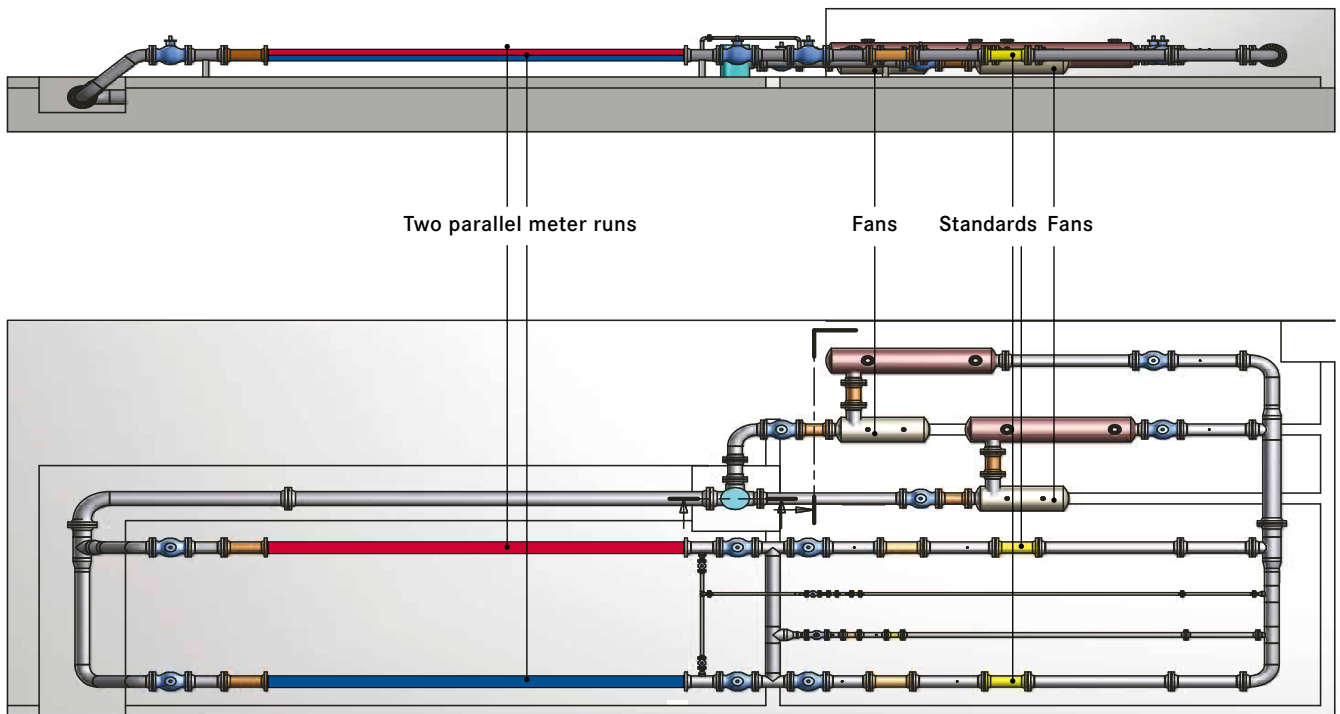
In addition to **measurements and initial or follow-up verifications**, we offer a **full suite of services** for your gas measuring devices:

- Removal and collection of the equipment
- Condition inspections
- Customer-oriented repairs
- Retrofitting encoder counters
- Preliminary testing / verification with air
- High-pressure testing / verification with natural gas
- Return and installation of the equipment
- Flexible processing: fast, customized and customer-focused
- Short throughput and processing times
- Test dates can be arranged even at short notice!

Everything from a single source.

RMA high-pressure test facility: The facts

- Testing with natural gas under real conditions
- Closed-loop system
 - independent of the daily gas consumption
 - independent of the weather
 - independent of the consumption
- All pressure ranges and all flow rates of the measuring range are fully adjustable
- Constant gas quality
- Two parallel meter runs of more than 12 m each
- All flange sizes from PN 10 up to ANSI 600
- Pressure: 1 bar absolute up to 51 bar absolute
- Flow rate: 3 m³/h up to 13,000 m³/h
- Nominal diameter of the specimen: from DN50 up to DN 500
- Working standards
 - **2 x G 4000** Turbine gas meter
 - **G 650** Turbine gas meter
 - **G 100** Rotary displacement gas meter



PIPELINE EQUIPMENT

**RMA Mess- und Regeltechnik
GmbH & Co. KG**

Forsthausstrasse 3 | D-77866 Rheinau

Telephone +49 (0) 78 44/404-0

Telefax +49 (0) 78 44/404-138

E-Mail mrt@rma-rheinau.de

www.rma.de

Germany RMA Kehl GmbH & Co. KG, Kehl
RMA Rheinau GmbH & Co. KG, Rheinau
RMA Training GmbH & Co. KG, Rheinau

France RMA France S.A.S., Bischheim

Poland RMA Polska Sp. z o. o., Chojnów

UK RMA Pipeline Equipment Ltd., Batley

Bahrain RMA Middle East S.P.C, Al Hidd

Russia OOO RMA Rus, Elabuga

USA RMA North America Inc., Houston, Texas



Engineering & Excellence In Measurement Packages

Eximp Measurement Private Limited

Corporate Office Greater Kailash, New Delhi

Sales Office Nigdi, Pune

Projects Office Vadodara, Gujarat

Contact +91 020 27654694

E-Mail empl@eximpmeasurement.com

www.eximpmeasurement.com