



### About Us

## Eximp Measurement Pvt. Ltd.

Eximp Measurement Private Limited (EMPL) is a specialized provider of design, supply, construction, commissioning and continuous service support of field-proven innovative products and solutions for flow measurement in India.

+91 (020) 27654694

empl@eximpmeasurement.com

**Corporate:** Greater Kailash, New Delhi – 110048  
**Sales:** Nigdi, Pune – 411044  
**Projects:** Vadodara, Gujarat – 390008

## Tek-Cor 1100A

### Key Features:

- **Accuracy:**  $\pm 0.05\%$ ,  $\pm 0.1\%$ ,  $\pm 0.2\%$  or  $\pm 0.5\%$
- **Line Size:** ½" to 24"
- **Direct Mount Temperature:** -60°F to 200°F
- **Remote Mount Temperature:** -300°F to 400°F
- **Pressure Limits:** 580 to 3600psi
- **Output Signal:** 4-20 mA, Pulse, HART
- **Process Connections:** DIN, ANSI Flanges, NPT
- **Display :** OLED
- **Approvals:** UL Class I Div I

## Support Services

EMPL is committed to support its customers with competent pre & after-sales service to guarantee the function of our products and Engineered Systems, including on-site & re-calibration and / or reconfiguration support & training customers.

“Flow measurement and meter verification services.”

Tel: +91 751-752-7527

tascgroup@eximpinc.com



FLOW

CORIOLIS  
FLOW METER

## Measurement Products



It is challenging to measure the steady uniform flow of common viscous fluid, non-newtonian fluid, a slurry containing some solid components, including liquids containing some trace of gases.

Tek-Trol a technology-driven company that believes in providing consistent advanced measurement, automation, and control solutions. Offers Tek-Cor 1100A Coriolis mass flow meters designed to measure the direct mass of almost any fluid across any application.

# Tek-Cor 1100A

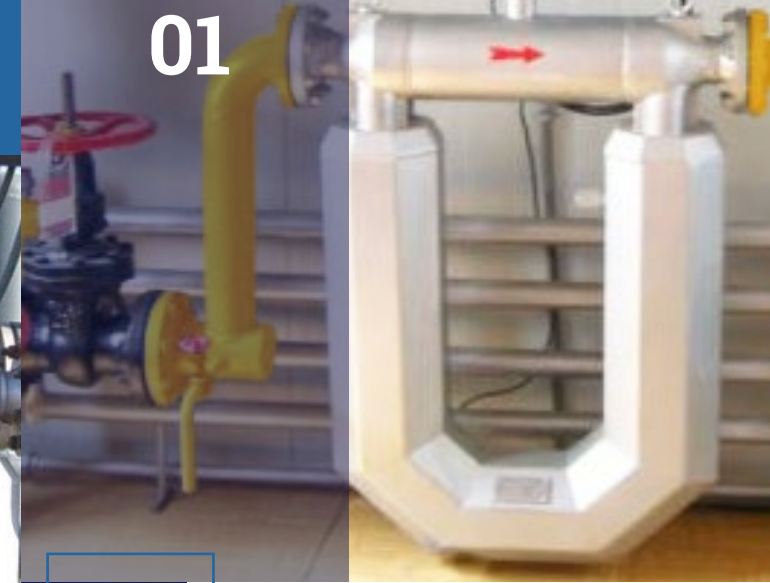
## Standard / Micro Bend

- Maintain operation as used within a wide range of applications to measure mass, density, and volume flow of gases and liquids
- Optimize flow for low-pressure loss. Compact and twin straight tube design including best-in-class price/performance ratio and high accuracy up to  $\pm 0.05\%$ ,  $\pm 0.1\%$ ,  $\pm 0.2\%$ , or  $\pm 0.5\%$ .
- Suitable for 3/8" to 8" (10 to 200mm) line sizes as smaller radius ensures a more compact instrument with significantly lower pressure differential values than other flow meters.
- Used in liquids, gases, and gas entrained liquids, including portable installations on trucks, rail tankers, portable rigs applications.

For demanding Custody Transfer applications which require the highest levels of measurement accuracy

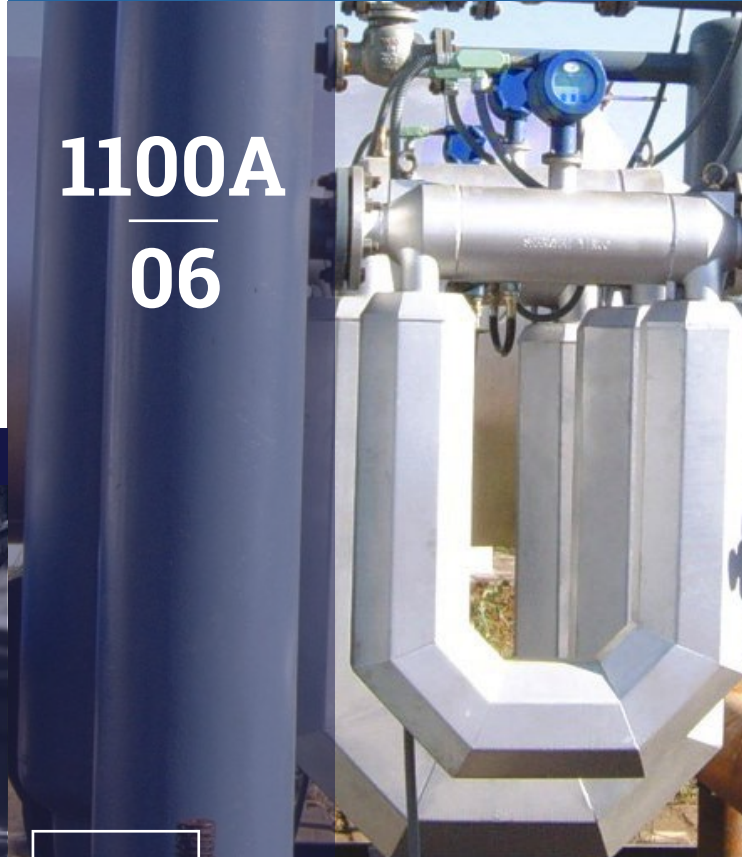
# 1100A

## 01



# 1100A

## 06



# Tek-Cor 1100A

## U-Tube

- U-Tube design is much more immune to meter-mounting variations and is reliable despite fluid density changes. Deliver highly accurate and repeatable measurements, including increased accuracy for higher rangeability.
- Suitable for aggressive & contaminated media to measure mass flow, density, temperature & volume flow, water-cut for oil/water mixtures.
- U tube design is widely accepted in water, wastewater, mining, mineral processing, power, pulp and paper, petroleum, chemical, and petrochemical industries.
- Typical applications would be sanitary, cryogenic, relatively clean, corrosive liquids, and gases/vapors in pipes from 1" to 8" inches.

# 1100A

## 02



# Tek-Cor 1100A

## Duo

Tek-Trol 1100A Duo is the most versatile and reliable flow meter for measuring the flow of liquids or gases for demanding custody transfer applications installed in hazardous locations.