

# FLOW

Your Partner for Flow  
Measurement Products  
and Solutions

SYSTEMS | PRODUCTS | SOLUTIONS | SERVICES

## Eximp Measurement Private Limited

Eximp Measurement Private Limited (EMPL) is a specialized provider of design, supply, construction, commissioning and continuous service support of field-proven innovative products and solutions for flow measurement in India.

@ empl@eximpmeasurement.com

+91 (20) 27654694

## CORIOLIS FLOW METER

### Applications

- Dairy Plants
- Oil and Gas
- Process
- Chemical
- Food and Pharmaceutical

It is challenging to measure the steady uniform flow of common viscous fluid, non-newtonian fluid, a slurry containing some solid components, including liquids containing some trace of gases.

Tek-Trol a technology-driven company that believes in providing consistent advanced measurement, automation and control solutions. Offers Tek-Cor 1100A Coriolis mass flow meters designed to measure the direct mass of almost any fluid across any application.

# Tek-Cor 1100A

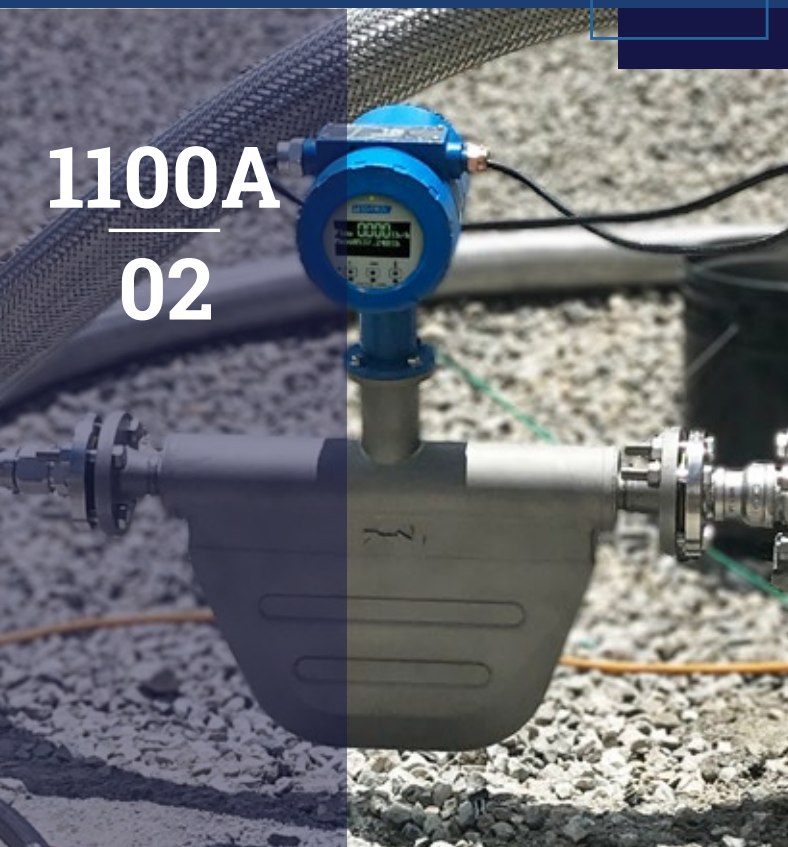
## Standard / Micro Bend

- Maintain operation as used within a wide range of applications to measure mass, density and volume flow of gases and liquids.
- Optimize flow for low-pressure loss. Compact and twin straight tube design including best-in-class price/performance ratio and high accuracy up to  $\pm 0.05\%$ ,  $\pm 0.1\%$ ,  $\pm 0.2\%$ , or  $\pm 0.5\%$ .
- Suitable for 3/8" to 8" (10 to 200mm) line sizes as smaller radius ensures a more compact instrument with significantly lower pressure differential values than other flow meters.
- Used in liquids, gases and gas entrained liquids, including portable installations on trucks, rail tankers, portable rigs applications.

## Specifications

Accuracy	$\pm 0.05\%$ , $\pm 0.1\%$ , $\pm 0.2\%$ or $\pm 0.5\%$
Density	0.001g/cm <sup>3</sup>
Process Media	Liquid or Gas
Transmitter	Digital / Analog
Power Supply	18-28VDC, 85-220VAC
Elements	3 optical keys for operator
Graphic Display	OLED

1100A  
02



1100A  
01



# Tek-Cor 1100A

## U-Tube

- U-Tube design is much more immune to meter-mounting variations and is reliable despite fluid density changes. Deliver highly accurate and repeatable measurements, including increased accuracy for higher rangeability.
- Suitable for aggressive & contaminated media to measure mass flow, density, temperature & volume flow, water-cut for oil/water mixtures.
- U tube design is widely accepted in water, wastewater, mining, mineral processing, power, pulp and paper, petroleum, chemical and petrochemical industries.
- Typical applications would be sanitary, corrosive liquids & gases/vapors etc.

## Specifications

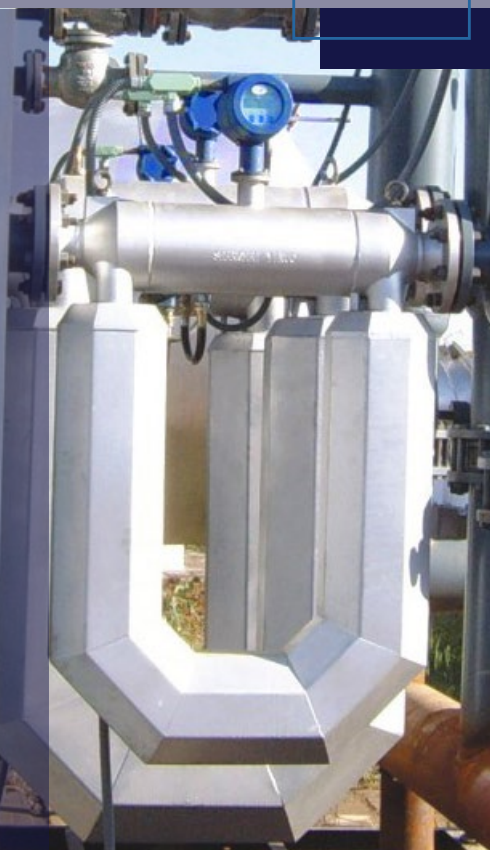
Accuracy	$\pm 0.05\%$ , $\pm 0.1\%$ , $\pm 0.2\%$ or $\pm 0.5\%$
Density	0.001g/cm <sup>3</sup>
Process Media	Liquid or Gas
Transmitter	Digital / Analog
Power Supply	18-28VDC, 85-220VAC
Graphic Display	OLED

# Tek-Cor 1100A

## Duo

- For demanding Custody Transfer applications that require the highest levels of measurement accuracy.
- Most versatile and reliable flow meter for measuring the flow of liquids or gases for demanding custody transfer applications installed in hazardous locations.
- More immune to meter mounting variation and allows for measuring large flow ranges using smaller pipe sections.
- Minimizes the space required for installation and helps save money through reduced expenditure on pipework alterations and overall engineering.

1100A  
06



## Specifications

Accuracy	±0.05%, ±0.1%, ±0.2% or ±0.5%
Density	0.001g/cm <sup>3</sup>
Process Media	Liquid or Gas
Transmitter	Digital / Analog
Power Supply	18-28VDC, 85-220VAC
Elements	3 optical keys for operator
Graphic Display	OLED

1100A  
03



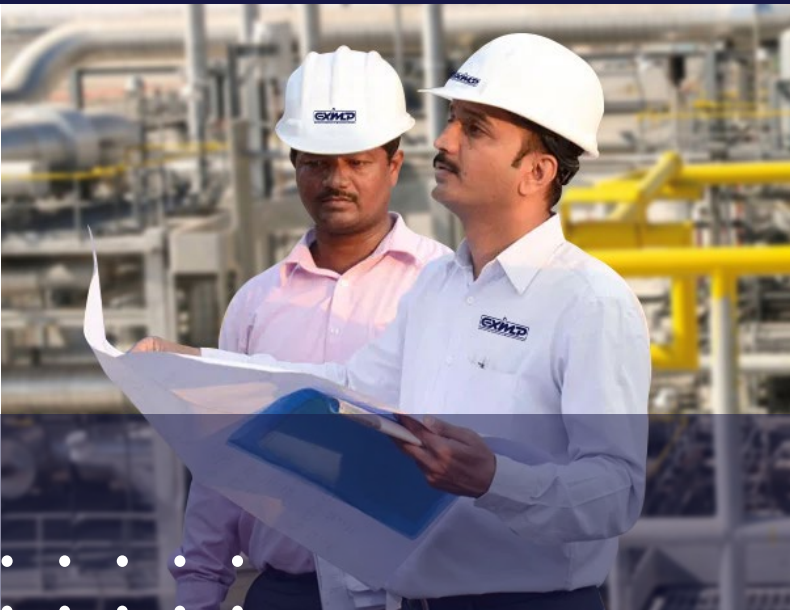
## Tek-Cor 1100A Nano

- Mass Flow Rate, Volume, Density and Temperature Measurements.
- Compact design specifically designed to provide optimum performance in low-flow applications.
- Comprised of a single flow tube which is considerably smaller in size than the conventional U-Shaped tube.
- Rugged meter with no moving parts and minimal maintenance.
- A triangle-shaped bent tube design meter can handle large flow volumes at low-pressure drops.

## Specifications

Accuracy	±0.05%, ±0.1%, ±0.2% or ±0.5%
Density	0.001g/cm <sup>3</sup>
Process Media	Liquid or Gas
Transmitter	Digital / Analog
Power Supply	18-28VDC, 85-220VAC
Graphic Display	OLED

# Engineering eXcellence In Measurement Packages



## OUR OTHER FLAGSHIP MEASUREMENT PRODUCTS

- Ultrasonic Flow Meter
- Thermal Mass Flow Meter
- Electromagnetic Flow Meter
- Cone Flow Meter

## Contact us

- Registered Office**  
 301, DLF Commercial Centre, Greater Kailash – II  
 New Delhi – 110048, India  
 +91 (11) 45686122
- Sales Office**  
 1 & 3, Shyamnand, Sector No 24/379A,  
 Pradhikaran, Nigdi, Pune – 411044, India  
 +91 (020) 27654694
- Project Office**  
 1<sup>st</sup> Floor, Plot No. 17, Sangath Bunglows,  
 Off Sama Savali Road, Vadodara – 390008, India  
 Tel : +91 9011932007
- Tel : +91 7517527527  
 tascgroup@eximpinc.com

## Support Services

EMPL is committed to support its customers with competent pre & after-sales service to guarantee the function of our products and Engineered Systems, including on-site & re-calibration and / or reconfiguration support & training customers.

“Flow measurement and meter verification services.”



[www.eximpmeasurement.com](http://www.eximpmeasurement.com)  
[empl@eximpmeasurement.com](mailto:empl@eximpmeasurement.com)



**Flow  
Measurement**



**Level  
Measurement**



**Temperature  
Measurement**



**Pressure  
Measurement**



**Tekvalsys**